



# CAREERS

# AT LDC

WHERE PASSION MEETS PURPOSE.



# OUR MISSION

ENGINEERING COMMUNITIES, SHAPING LANDSCAPES

At LDC, we don't just create designs, we craft legacies that stand the test of time. With a rich local history in the DMV as our backdrop, our team is committed to preserving and enhancing the fabric of our community through thoughtful civil engineering, landscape architecture, land planning, and land surveying.

Community impact is more than a goal; it's **our mission**. Every project we take on is an opportunity to contribute positively to the places we call home. From sustainable infrastructure solutions to green spaces that bring people together, we are dedicated to creating environments that make a lasting difference.

At LDC, your career is not just a job; it's a journey of growth and impact. Join us in shaping the future, where your skills, passion, and dedication contribute to the ongoing story of our firm and the communities we serve. Together, let's build a legacy that reflects the values of mentorship, inclusion, and community impact.



# OUR LEADERS

Our leadership group stands as a beacon of diversity, passion, and mentorship. Comprised of thought leaders from various backgrounds and experiences, our leadership team brings a wealth of perspectives that drive innovation and excellence. They serve not only as decision-makers but as mentors, guiding and inspiring teams to reach their full potential.



**Matt Marshall, LS, AICP**  
President



**Elis Librada, LS**  
Vice President of Land Survey



**Jessica Bradshaw**  
Director of Project Management, Landscape Architecture & Planning



**Dean Dockery, LSIT**  
Director, Land Survey Computations & Platting



**Josh Marshall, PE**  
Vice President of Land Development



**Jim Madison, PE**  
Director of Project Management, Land Development



**Rob Aboulmouna**  
Senior Project Manager, Land Development



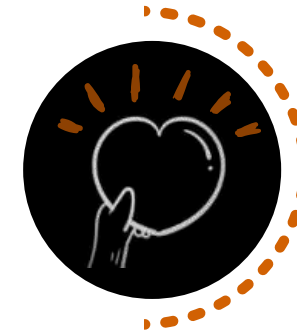
**Joan Holliday**  
Controller

# GUIDED BY OUR VALUES

At LDC, our commitment to core values isn't confined to mere statements on our website – we live and breathe them in every facet of our operations. Our values are not just a promise; they are a **lived reality**.

## EMPATHY

We put ourselves in our clients' shoes, and by understanding their perspectives, we not only enhance the quality of our work but also build lasting relationships based on trust and shared goals. This empathetic approach extends to our internal culture as well, fostering a collaborative and supportive environment among our team members.



## INTEGRITY

We believe in upholding unwavering ethical standards, ensuring honesty, transparency, and accountability in every aspect of our operations. From project inception to completion, our commitment to integrity is reflected in our communication, decision-making processes, and the quality of our work. Integrity is not just a value; it's a cornerstone that defines our identity.



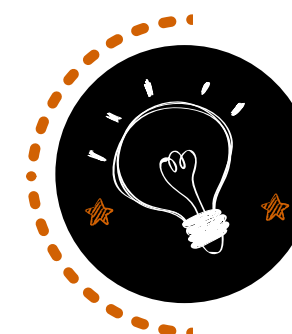
## PASSION

Passion is the driving force behind everything we do at LDC. We thrive on the challenges presented by each project, approaching them with an infectious zeal that motivates our team and resonates with our clients. Our team is fueled by a deep-seated enthusiasm to push boundaries, challenge norms, and deliver exceptional results.



## INNOVATION

We don't just embrace change; we drive it. We foster a culture that encourages creative thinking, constantly seeking new and inventive solutions to address the evolving challenges in the AEC industry.



## CLIENT SUCCESS

Our commitment to unparalleled client success goes beyond meeting project requirements – it's about understanding and exceeding our clients' expectations at every step. We prioritize open communication, responsiveness, and a proactive approach to anticipate and address our clients' needs.



# OUR SERVICES



**LAND DEVELOPMENT  
ENGINEERING**



**LAND SURVEY**



**LANDSCAPE  
ARCHITECTURE**



**LAND PLANNING**



# OUR REACH

**PRINCE WILLIAM COUNTY, VA**

- Town of Dumfries
- City of Manassas
- Town of Occoquan
- Woodbridge

**CULPEPER COUNTY, VA**

- Town of Culpeper

**FREDERICK COUNTY, VA**

- Town of Winchester

**STAFFORD COUNTY, VA**

**FAUQUIER COUNTY, VA**

**ORANGE COUNTY, VA**

**WARREN COUNTY, VA**

**BERKELEY COUNTY, WV**

**CITY OF MANASSAS PARK, VA**

**LOUDOUN COUNTY, VA**

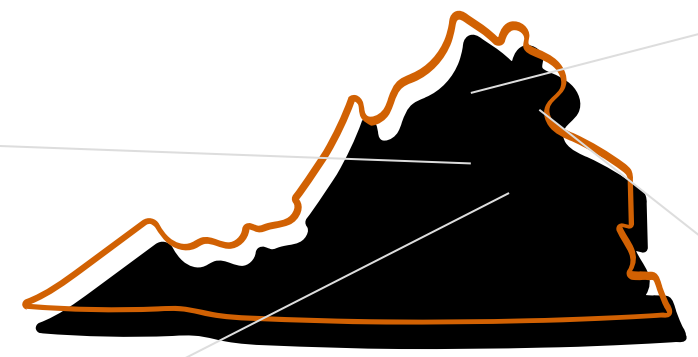
- Ashburn
- City of Leesburg

**FAIRFAX COUNTY, VA**

- Centreville
- Chantilly
- City of Fairfax
- City of Falls Church
- Lorton
- Springfield
- Town of Herndon
- Tysons Corner Area
- Town of Vienna

**ARLINGTON COUNTY, VA**

**WASHINGTON, DC**



# LAND DEVELOPMENT ENGINEERING

We specialize in land development engineering services that meticulously balance the diverse needs of our clients, the environment, and the community at large. LDC's team of passionate engineers employ innovative and sustainable solutions to navigate complex engineering and regulatory challenges across diverse project types and sizes. Our areas of expertise include:

- Construction Plans
- Subdivision Plans
- Site Plans
- Preliminary Engineering
- Design Development
- Road and Highway Design
- Watermain Design & Modeling
- Permit Grading Plans
- Low Pressure Force Main Design
- Innovation Stormwater Management Design
- LEED Accredited & Sustainable Design
- Flood Plain Studies
- Infill Lot Grading Plans

We recognize the importance of environmental stewardship and community integration, striving to implement practices that not only enhance the functionality of the developed spaces, but also contribute positively to the ecological landscape and surrounding neighborhoods.



OUR SERVICES

# LAND SURVEY

## PRECISION BEYOND MEASURE

Accurate land surveys are vital for successful planning and development. LDC prioritizes surveys, using advanced technology to maximize project potential. Our surveyors are licensed in VA, WV, and DC. Our capabilities include:

- Aerial Control Surveys
- ALTA and Boundary Surveys
- As-Built Surveys
- Bathymetric Surveys
- Building/Structure Monitoring
- Condominium Plats and Plans
- Construction Stakeout Surveys
- Flood Certification Surveys
- Global Positioning Systems (GPS) Surveys
- Record Plats
- Topographic Surveys
- Utility & Right-Of-Way Surveys
- Vertical High-rise Floor Control
- Wetland Surveys
- Tree Location Surveys

Our dedication to precision is not merely a goal but a standard, guaranteeing our clients reliable data for informed decision-making. Safety is at the forefront of our operations, as we implement rigorous protocols to protect both our team and the community. Beyond technical prowess, our deep-rooted local expertise allows us to navigate the unique challenges posed by diverse terrains and regulatory environments, ensuring seamless project execution.



## OUR SERVICES

# PLANNING & LANDSCAPE ARCHITECTURE

At LDC, we are dedicated to harmonizing the needs of our clients, the environment, and the community through our comprehensive land planning and landscape architecture services. By blending aesthetic creativity with functional expertise, we strive to create outdoor spaces that not only meet the immediate needs of our clients but also foster a sense of community and environmental responsibility.

- Master Planning
- Feasibility Studies
- Land Use Entitlements
- Code Analyses
- Perspectives
- Renderings
- Placemaking
- Signage
- Special Exceptions
- Special Use Permits
- Rezoning Applications
- Comprehensive Plan Amendments
- Passive & Active Open Space Designs
- Amenity Planning & Design
- Urban & Suburban Community Design
- Community Outreach
- Landscape Architecture
- Tree Preservation
- Streetscape Visioning





# OUR WORK

ELEVATING COMMUNITIES ONE DESIGN AT A TIME



## THE LOFTS AT RESTON STATION

A redeveloped 1.5-acre site located near the Wiehle-Reston East Metro Station, this community offers a 32 unit, four level luxury condominium building and 12 stacked townhome condominiums. LDC worked with Fairfax County planning staff along with adjacent developers to coordinate the development of this transit-oriented and pedestrian friendly development.

- > **PROJECT LOCATION:** FAIRFAX COUNTY, VA
- > **SERVICES:** LAND DEVELOPMENT ENGINEERING



## THE MATHER BUILDING

LDC completed one of its most challenging projects; The Mather Buildings in Mclean, VA. The project consists of twin towers of 28 and 20 floors respectively. LDC was tasked with staking the points for glass brackets around the edge of the concrete for each floor. The tolerance was 1/16 of an inch - .005' for over 300 points on every floor. This level of precision required state-of-the-art equipment, combined with "old school" methods, and talented staff.

- > **PROJECT LOCATION:** MCLEAN, VA
- > **SERVICES:** LAND SURVEY



## PRESERVE AT LONG BRANCH

Lead a national homebuilder through their due diligence period and successfully obtained approvals of the construction plans for three sections. This community includes the design of miles of stream valley trails, miles of public street and 5 storm water management facility and preservation of nearly 215 acres of undisturbed forested open space.

- > **PROJECT LOCATION:** PRINCE WILLIAM COUNTY, VA
- > **SERVICES:** LAND PLANNING & LANDSCAPE ARCHITECTURE



# LDC

# EMPLOYEE EXPERIENCE



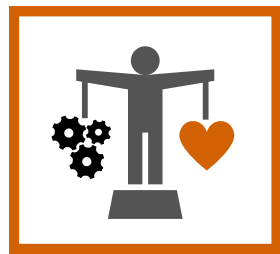
# WORKING AT LDC

## OUR CULTURE

Here at LDC, we believe that fostering the growth of each team member not only strengthens our workforce but also ensures that our collective knowledge evolves with the ever-changing landscape of our industry.

Inclusion is not just a checkbox; it's the essence of who we are. We actively seek diverse voices and perspectives because we understand that our differences make us stronger. Our commitment to inclusivity is reflected not only in our workforce but also in the projects we undertake, ensuring that our designs resonate with the varied communities we serve.

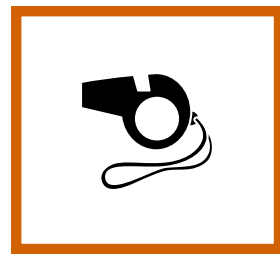
## OUR BENEFITS



FAMILY-FIRST,  
WORK-LIFE BALANCE



COMPREHENSIVE  
MEDICAL, DENTAL &  
VISION COVERAGE



ON-DEMAND EXTERNAL  
CAREER COACH



PROFESSIONAL  
DEVELOPMENT  
SUPPORT



401(K) WITH  
MATCHING



WELLNESS STIPEND



HOME OFFICE  
SUPPORT



TUITION ASSISTANCE





“OUR TRUE STRENGTH LIES IN THE COLLECTIVE EXPERTISE, PASSION, AND DEDICATION OF OUR TEAM. **EMPOWERING** AND INVESTING IN THE ONGOING DEVELOPMENT OF OUR EMPLOYEES IS NOT JUST A COMMITMENT; IT'S A STRATEGIC IMPERATIVE.”

PRESIDENT | MATT MARSHALL



# GROW WITH US.



703-680-4585



4585 Daisy Reid Avenue Suite 201 Woodbridge, VA 22192  
2650 Park Tower Drive Suite 250 Vienna, VA 22180



coreservices@ldc-va.com



<https://www.ldc-va.com/>

